



*Sunken  
Landscape  
Design*

# 下沉式景观

凤凰空间·华南编辑部 编

江苏科学技术出版社



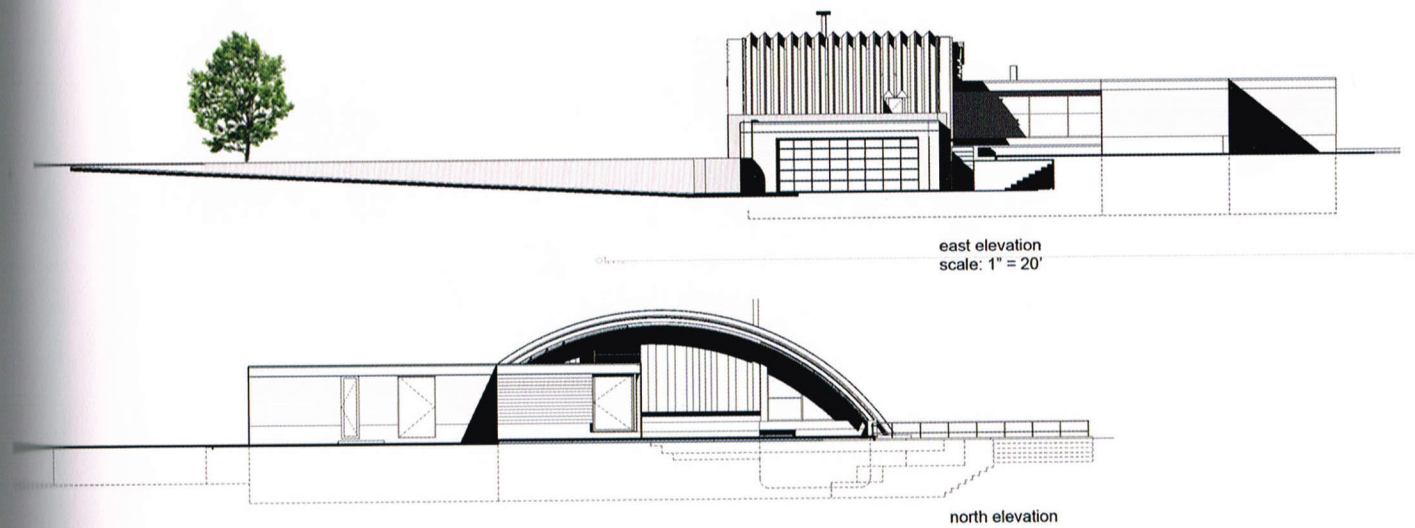


Arc House / 弧形屋  
庭园





Location 美国纽约东汉普顿  
East Hampton, NY, USA



The Arc House is a private residence designed for a photographer, his wife and their two big dogs. The primary living space of the house is covered by an arched corrugated steel roof.

The arch contains the living, dining and kitchen areas in an open plan. A staircase, the kitchen counter and other low-height components define the space within it. The horizontal entry canopy to the arch and a few other components within it are at a height of 2.31 m, creating a touchable lower plane within the larger structure. The lower level houses an office, a sitting room, a garage and work out areas; part of the lower level opens to a courtyard that allows cool air circulation and a distinctly private outdoor space. From the lower level, cool air circulation up to the high point of the arch and through convection descends down the sides creating an even temperature.

By splicing the house into the landscape, designers were able to transform the flat site into one with multiple horizons. As such the arch appears to act like a bridge, spanning from one structure to the next.

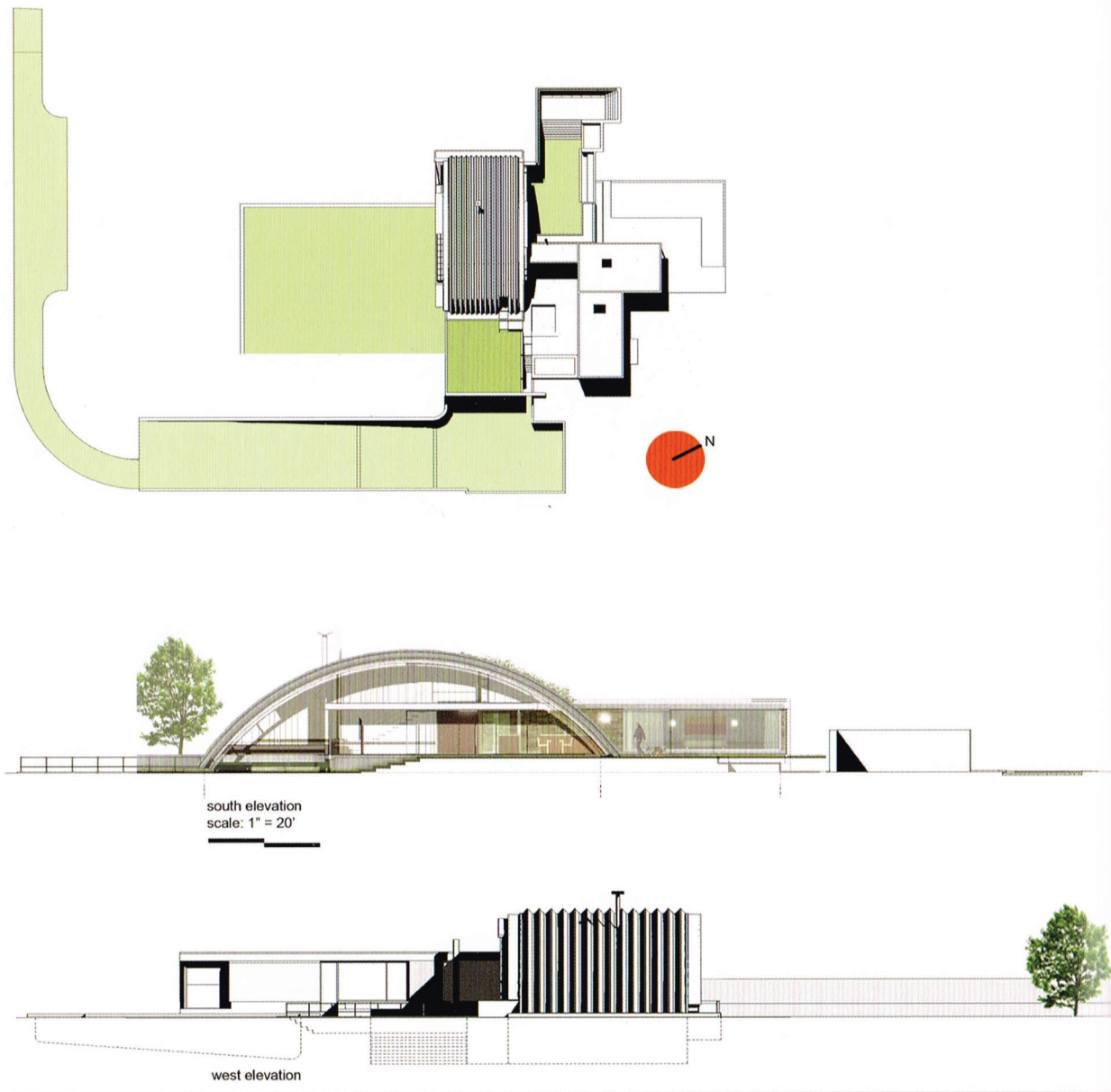
该项目是专为一位摄影家及其妻子，还有他们的两只大狗所设计的一座私人住所，其主要生活空间由一个拱形波纹钢屋顶覆盖着。

拱形屋顶下是开放式设计的起居、用餐及厨房空间。楼梯、厨房料理台和低矮的家具界定了这片区域内各空间的分布。与拱形屋顶相连的水平入口遮篷及其内部组件都为 2.31 m 高，在一个较大的建筑结构中成功地打造了一个可触碰的低平面，形成了视觉上的平衡。房屋底层分布着一个办公室、一个客厅、一个车库以及数个工作区；底层的部分区域面朝室外庭园，使清凉的空气能够在室内流通，创造了一个绝佳的私密空间。清凉的空气从底层向拱形屋顶的最高点流动，再从两边下降，实现了空气的对流，使屋内能够保持一致的温度。

通过将整座房屋与其外部景观进行拼接，设计师成功地赋予原本平坦的场地以丰富的层次感，而拱顶在此则起到了桥梁的作用，横跨两个不同的结构，并将两者完美地融为一体。

Photography Matthew Carbone, Adam Friedberg, Mark Roskams





## Harmony with Natural Landscape / 半封闭、半开放宅邸庭园

*Situated on the verge of a forest, the case is surrounded by primitive natural landscape. Hence, the designer didn't add too much artificial decoration to the landscape of the garden but chose to adopt a garden floor to expand the overall landscape to the front part of the house and maintain a simple garden as much as possible so that it goes well with the environment around. The moment you step out of the villa, you would immediately feel nature. Furthermore, the semi-circular roof can not only block strong wind but also gather raindrops and dews bringing the garden two small-scale water views. Plus, the small sunken garden on one side of the villa increases the undulate layers of the open and broad space and enhances its sense of movement.*

本案位于树林的边缘，周围拥有原生的自然景观，因此，设计师并没有为庭园景观做太多的人工修饰，而是选用花园层的方式进行庭园设计，使整体的景观延伸至屋前，并尽可能地保持庭园的简单，使其与四周的环境相互融合。一走出别墅的门口，人们就能感受到大自然的清新。此外，半圆形的屋顶设计不仅能够抵挡周围开阔的强风，还有利于收集雨水和露水，同时为庭园增加了两个小型水景。别墅的侧面的下沉式小型庭园更为整个开阔的空间增加了起伏的层次，使整个空间充满律动。

