

Your \$100K Shipping-Container House Is Ready For Move-In

 [architizer.com /blog/maziar-behrooz-insta-house/](https://architizer.com/blog/maziar-behrooz-insta-house/)

Lamar Anderson

If you're the sort who's been squeezing your life into [tiny-house](#)-level accommodations, the New York-based architect [Maziar Behrooz](#)'s shipping-container house is the perfect upgrade (and, for the rest of us spacehogs, a respectable downgrade). For just under \$100,000, you'll get a 960-square-foot high-ceilinged modernist dollhouse, complete with interior finishes, electrical fixtures, and sliding windows—shipping included!

[Save this image to a collection](#)



Maziar Behrooz's Insta_House is based on his 2010 concept for the Container House (pictured), which began as a backyard art studio.

[Save this image to a collection](#)



Dubbed the "Insta_House", Behrooz's design joins four 8-by-40-foot shipping containers in a jaunty and spacious two-story box. The house expands on the architect's 2010 [Container Studio](#)—originally conceived as a backyard art studio—and standardizes the earlier design to make it replicable. According to Behrooz's [project page](#), the architects can install an Insta_House on any site in the U.S. in under a week. That's faster than the month it took a pair of Danish architects to [print a house](#) from 820 sheets of plywood.

Save this image to a collection



Prices for the Insta_House start at \$99,800. Upgrades include a foundation (\$2,500), basic insulation (\$6,380), radiant heat (\$9,860), and a kitchenette (\$8,500).

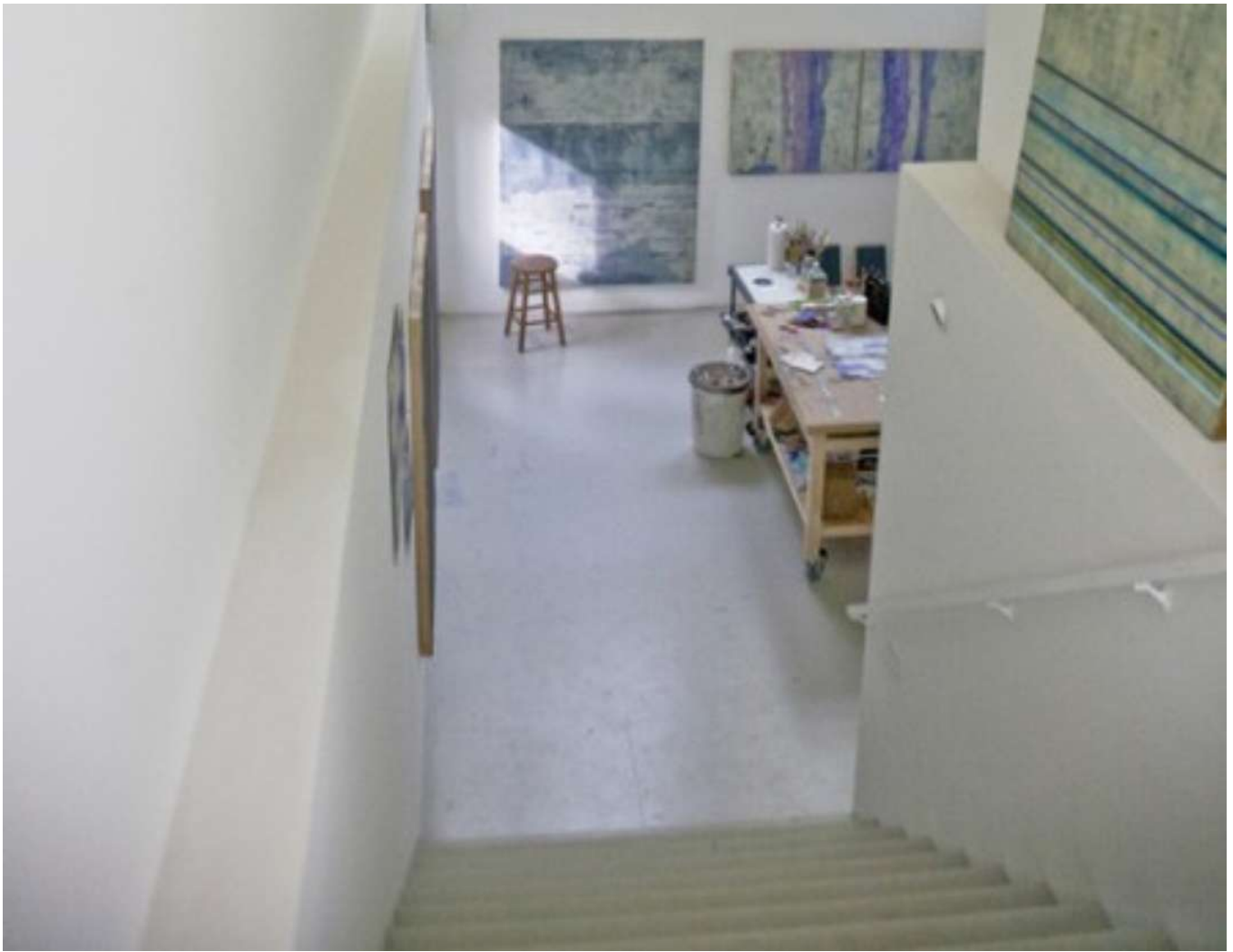
Behrooz's houses would also be useful in humanitarian design, from providing [insta-schoolhouses](#) to one-upping FEMA with some truly stylish emergency housing (no offense, [pink houses](#)). Plus, you'll finally have a place to put all that [wood-pallet furniture](#)!

Save this image to a collection



Save this image to a collection





[Save this image to a collection](#)

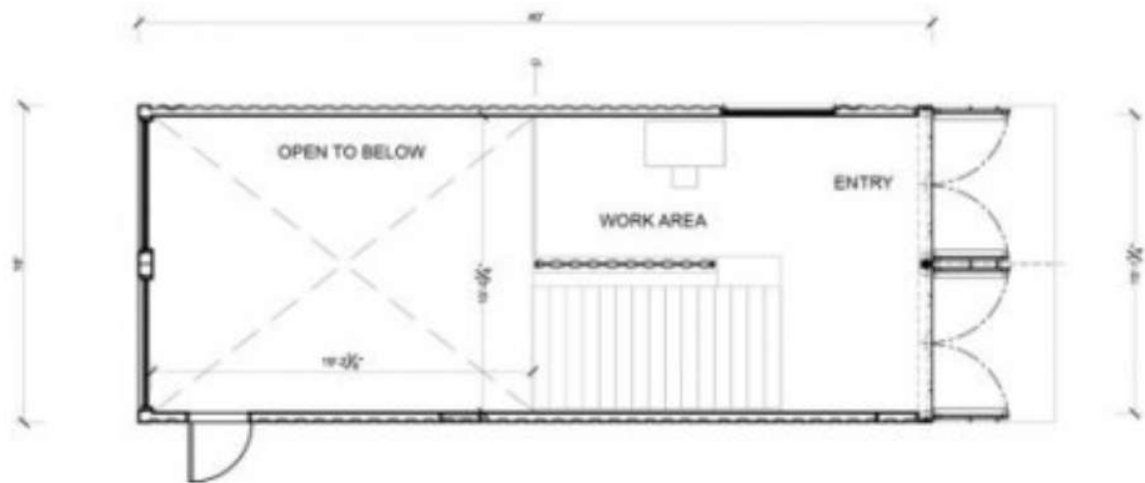


Save this image to a collection

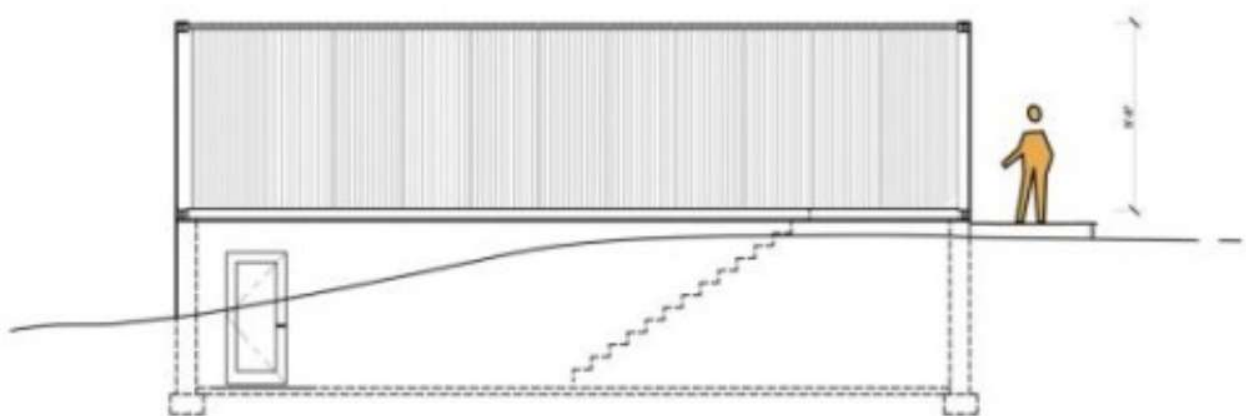


The upper level.

Save this image to a collection



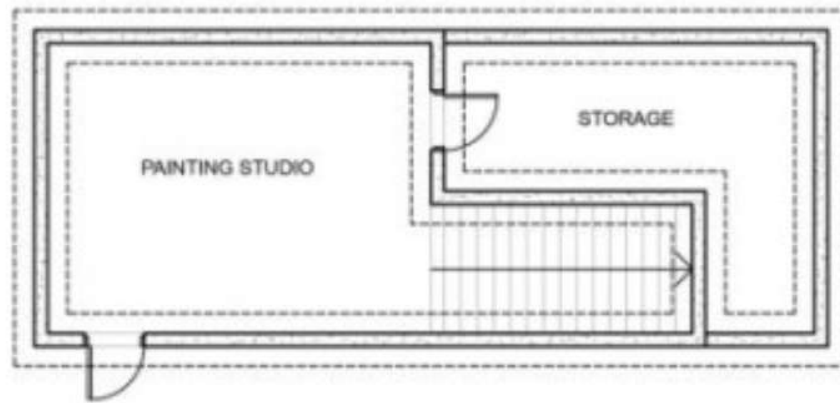
GROUND FLOOR PLAN
scale: 1" = 8'



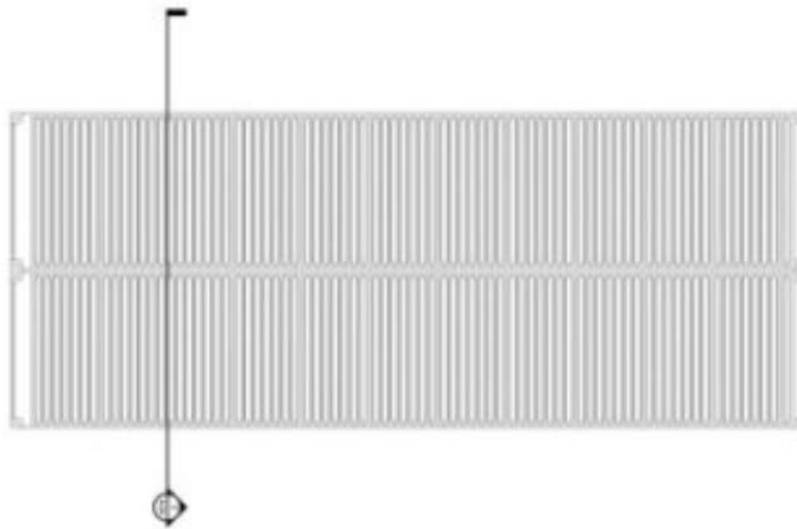
WEST ELEVATION
scale: 1" = 8'



Save this image to a collection



LOWER LEVEL PLAN
scale: 1" = 8'



ROOF PLAN
scale: 1" = 8'

[via [Gizmag](#)]